

## Hand Cast

The first step in making the prosthesis is obtaining an impression of the residual limb. Impressions of the residual limb will be captured by hand casting with plaster. The cast will be filled with plaster to make a model of the limb. The model will then be modified to obtain appropriate weight bearing characteristics and shape to fit the needs of the patient.

## Multiple Diagnostic Fittings

Diagnostic Test Sockets (DTS) are clear plastic sockets used to check fit and mock-up alignment of components. Sockets should contact limb in all areas, have no visible gapping, be comfortable and offer control through gait cycle or range of motion. At this stage, definitive componentry will be set up and aligned both statically and dynamically. The DTS allows us to continually fine tune fit throughout the alignment process. After all adjustments have been made to the DTS socket, fit and alignment will be captured and transferred to a definitive socket.

## Delivery of Prosthesis

Prosthesis will be completed with all definitive materials and componentry. Fit and alignment will be verified and necessary adjustments will be made. At this point we will refer you to a therapist for formal gait training. Even though the prosthesis is in its definitive state, we will continue to monitor your progress through frequent follow-up care.

## Coordinated Rehab Process

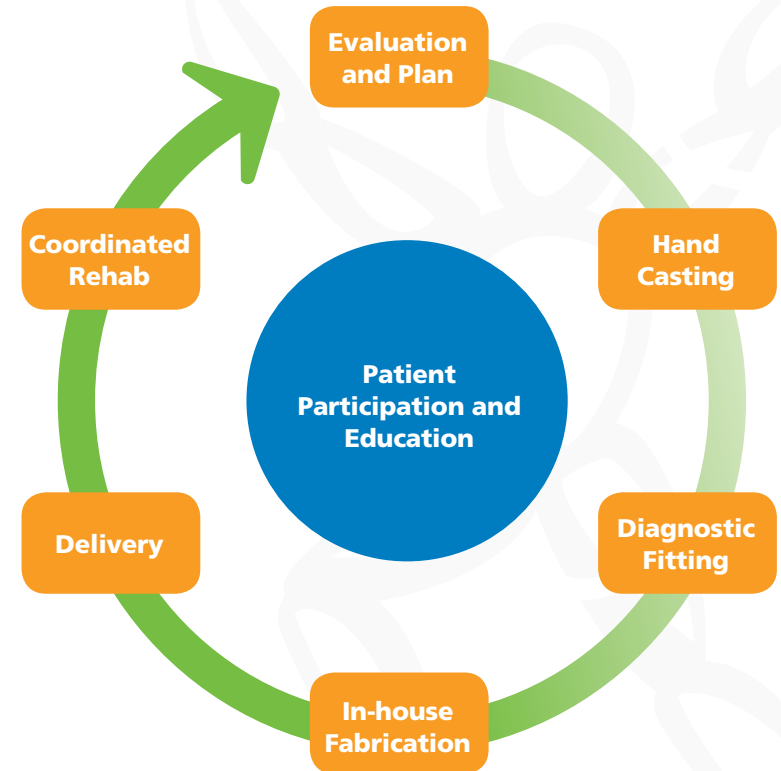
Our practitioners will assist you to coordinate your complete prosthetic rehab experience. This includes follow-up throughout the rehab process, often in person at the rehab facility. We realize goals and aspirations may change or evolve as your confidence improves. In addition, your body and residual limb will continue to have changes. We will manage you through those changes until it becomes necessary to replace sockets or components. At that time, the prosthetic evaluation process repeats itself.



# Outcome-Based PROSTHETICS

## WHAT TO EXPECT:

The **POSI** Patient Experience  
The **POSI** Process



The **POSI Patient Experience**, focuses on providing the patient a positive experience from start to finish.

## Patient Education

Patient education is essential to every step of our process. We will provide you with education on socket systems, suspension options, and componentry selection and encourage you to participate in the design process. We will be honest and truthful about your expectations and assist you to set reasonable goals.

## Team Approach

POSI offers a team approach to patient care with your primary practitioner as lead. This unique environment offers many benefits to our patients. Practitioners are able to pool their knowledge and offer input. Patients will develop relationships with multiple practitioners allowing for seamless follow-up care. Additionally, our team expands beyond the office to include physical therapists, doctors, peer counselors, and support groups.

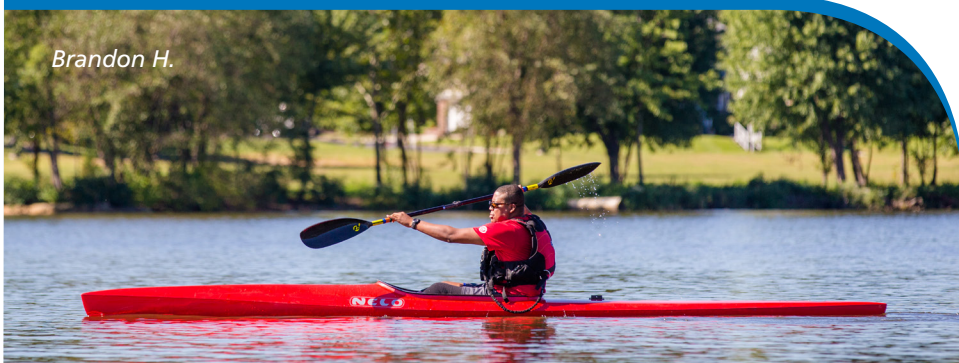
## Unparalleled Follow-up Care

A key factor in the success of our patients, is follow-up care. Timelines and frequency will vary depending on the experience level and time post-amputation. POSI will continue to manage your prosthetic care throughout your lifetime.

## Expedited Services

At POSI, we understand the importance of providing services in a quick and efficient way to expedite your rehab experience. Our on-site lab allows for adjustments to be made to your prosthetic while you wait leading to virtually no down time.

*Brandon H.*



## Technology

At POSI, we are proud to have a great working relationship with many manufactures and to serve as a beta test site for the latest technology. Our practitioners and technicians frequently think outside of the box developing new techniques in manufacturing and socket design. Our staff has taught, as well as attended, a variety of continuing education courses.



**The POSI Process** is an important part of making sure you have the best outcomes possible. Our comprehensive process includes:

## Initial Evaluation

Subjective and objective prosthetic evaluation performed each time a patient is in need of a new prosthesis or socket replacement. A thorough evaluation is an essential first step in choosing the most appropriate plan of prosthetic management to meet your needs and achieve your goals.

Before the physical evaluation begins, we ask very important questions about your hobbies, vocation, daily activities, family life, associated health concerns and your living environment. A physical evaluation is conducted consisting of limb shape and condition, general muscle strength and flexibility, and gait mechanics. At the time of your evaluation, we will discuss your aspirations and goals, as well as your time frame to accomplish them. We will talk about what barriers you see that may impact the realization of your goals and plan to mitigate those barriers.